

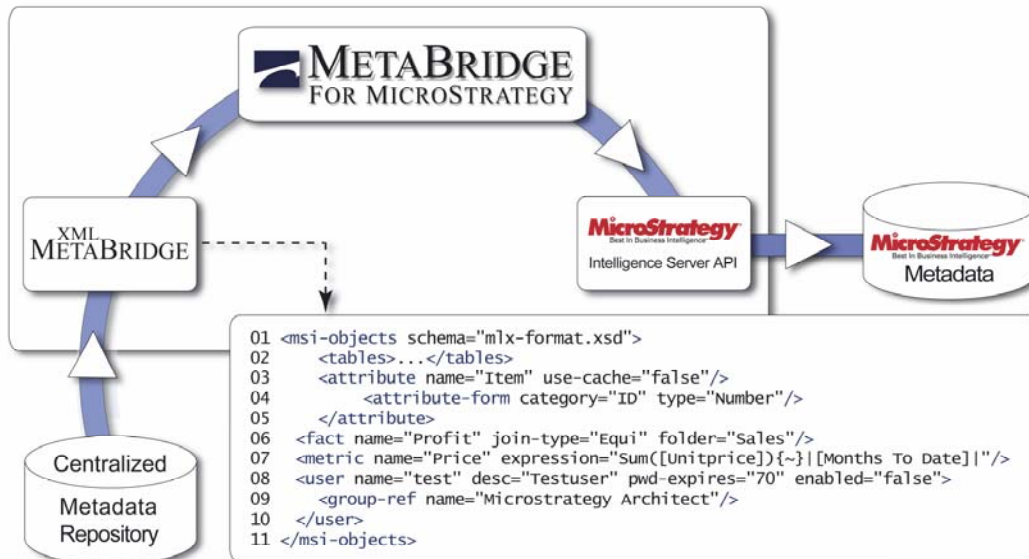
MetaBridge - Quickstart Guide



About MetaBridge for MicroStrategy

MetaBridge for MicroStrategy is a data warehouse developer tool for the automation of development and maintenance tasks for your MicroStrategy systems. MetaBridge makes metadata synchronisation with MicroStrategy projects simple. It allows you to automatically generate and update complete MicroStrategy projects or single Schema objects.

With MetaBridge you have the ability to achieve faster implementation of new MicroStrategy projects as well as the easier and cheaper maintenance of your existing systems.



About this Quick Start Guide

The purpose of this Quick Start Guide is to give an overview about the basic functionality of MetaBridge for MicroStrategy with the focus on the MetaBridge ConfigurationManager. On the basis of the MetaBridge example project it leads you through the first steps of configure and using MetaBridge for MicroStrategy.

Overview

This quick start guide describes the process of initializing an empty project with the MetaBridge Configuration Wizard.

Prerequisites

At the beginning, make sure that you have completed the following steps:

- MetaBridge Installation
- MicroStrategy Installation with tutorial
- available project source: MSI Tutorial (direct)
- available empty project: My First Project

Note: For an overview on creating an empty project, see the corresponding section (chapter "3. Creating an empty Repository") at the user manual.

!Warning: If the project "My First Project" isn't empty, the execution can cause a data loss.

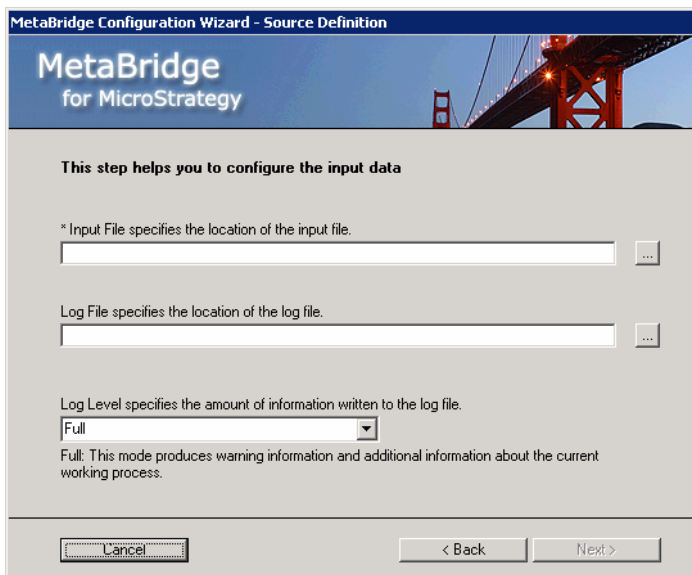
Getting Started

To launch the application click on Start → Programs → Metabridge → Configuration Manager. The start screen now appears.



Step 1

Welcome to the MetaBridge Configuration Wizard.
Click the Next button. The source definition step now appears.



Step 2

Source Definition:
Click the ... button next to input file box, a file select box appears.

Now select the 'sample-objects.xml' file at the MetaBridge installation directory.(required).
log file and *log level* selection aren't required.
If they are not specified default values (*log file* ,metabridge.log' in the same directory as the executetable and *log level* full) will be used.

Click the Next button. Now the Target Definiton form appears.

MetaBridge Configuration Wizard - Target Definition

MetaBridge
for MicroStrategy

This step helps you to configure the target settings

* Project Source containing the project defined by the attribute project-name.

* Project Name of the project MetaBridge connects to.

* Login MetaBridge uses to connect to the target project.

Password corresponding to the specified login.

* Datawarehouse Connection name of the projects warehouse connection.

Step 3

Target Definition I:
 Select the project source "MicroStrategy Tutorial (Direct)".
 The login form appears.

MetaBridge Configuration Wizard - Target Definition

MetaBridge
for MicroStrategy

This step helps you to c

* Project Source containing t

* Project Name of the project

* Login MetaBridge uses to connect to the target project.

Password corresponding to the specified login.

* Datawarehouse Connection name of the projects warehouse connection.

Step 4

Target Definition II:
 Enter the username and password and click the Login button.
 If you have a default MSI installation you can use the login "Administrator" and an empty password. Otherwise you have to use an account with administrative privileges. Finally, you should have an open connection.

MetaBridge Configuration Wizard - Target Definition

MetaBridge
for MicroStrategy

This step helps you to configure the target settings

* Project Source containing the project defined by the attribute project-name.

* Project Name of the project MetaBridge connects to.

Password corresponding to the specified login.

* Datawarehouse Connection name of the projects warehouse connection.

Step 5

Target Definition III:
 Select the project name "My First Project".
 Click the Folder Definition button. Now the Folder Definition form appears.

MetaBridge Configuration Wizard - Folder Definition

MetaBridge for MicroStrategy

The folder configuration offers you the possibility to change the name of the standard objects folder.

DBTable: Fact:

Column: Hierarchy:

Table: Metric:

Partition: Filter:

Attribute: Security Filter:

Category: DrillMap:

Transformation:

Ok Cancel

Step 6

Folder Definition:

This step allows you to change the name of the standard object's folder. This may be needed by the use of localized Microstrategy versions. By default the english names of the standard folders are used.

In that case you can ignore this form. Click the Ok button to close this form and then click the Next button on the Target Definition form and the next form appears.

MetaBridge Configuration Wizard - Process Definition

MetaBridge for MicroStrategy

This step helps you to configure how MetaBridge processes the input data.

* Process Mode this element allows specifying the processing behaviour of a MetaBridge execution.

Initial:

Initial: Initial fill of an empty repository.

Error behavior this element allows specifying Metabridge's behaviour if an execution error occurs.

Ignore Errors

The currently processed object will be skipped and the processor tries to handle the next one. This mode is recommended.

Cancel < Back Complete

Step 7

Process Definition:

This step allows specifying how MetaBridge processes the input data.

In this example the 'Initial' mode is selected. That means we will fill an empty project with the metadata.

Click the Complete button and the next form appears.

MetaBridge Configuration Wizard

MetaBridge for MicroStrategy

Configuration Overview:

Input File:	C:\Programme\MetaBridge\sample-objects.xml
Log File:	
Log Level:	Full
Process Mode:	Initial
Error Behavior:	Ignore Errors
Project Name:	My First Project
Project Source:	MicroStrategy Tutorial (Direct)
Login:	Administrator
Warehouse Connection:	Tutorial Data

Cancel < Back Run

Step 8

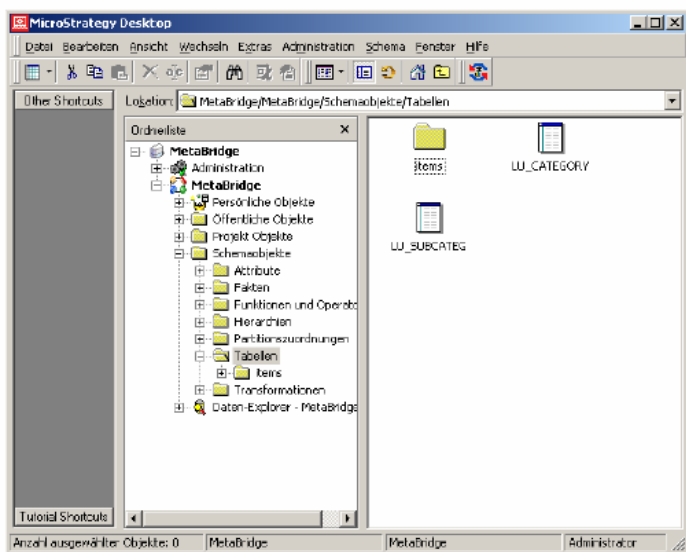
Overview:

This step gives a summary about the selected configuration. Click the Run button to launch the MetaBridge application with the current configuration.

```
C:\WINDOWS\system32\cmd.exe
[INFO] Input File 'E:\projects\metabridge\bin\sample-control.xml' seems to be valid.
[INFO] Initializing Server Connection: User=Administrator Source=MicroStrategy Tutorial (Direct) Project=My First Project
[INFO] Successfully started
[INFO] CREATING COLUMNS
[INFO] CREATING PHYSICAL TABLES
[INFO] CREATING LOGICAL TABLES
[INFO] CREATING TABLE ALIASES
[INFO] CREATING FORM CATEGORIES
[INFO] CREATING ATTRIBUTES
[INFO] CREATING ATTRIBUTE RELATIONSHIPS
[INFO] CREATING TRANSFORMATIONS
[INFO] CREATING TRANSFORMATION ATTRIBUTES
[INFO] CREATING FORM REFERENCES
[INFO] CREATING FACTS
[INFO] CREATING FACT REFERENCES
[INFO] CREATING HIERARCHIES
[INFO] CREATING METRICS
[INFO] CREATING FILTERS
[INFO] CREATING SECURITY FILTERS
[INFO] CREATING USER GROUPS
[INFO] CREATING USERS
[INFO] Successful application termination
```

Step 9

Launch the MetaBridge application:
Now the MetaBridge is running with the selected configuration.
The console output shows you details of the program execution progress.



Step 10

Review the execution results:
Now MetaBridge should have successfully created the sample project. When opening the Microstrategy Desktop Application and connect to the it, you can review the project items created by MetaBridge.

What comes next

After successfully completing the sample, you now can modify the sample. An other possibility to learn more about MetaBridge is try out several models e.g your own models.

For additional and further information about MetaBridge see the following available starting points for your customize searching.

- Start → Programs → MetaBridge → Help
- User manual
- Online help

Contact

Your contact:

Manuela Lentzsch
E-Mail: lentzsch@bi-web.de
Tel.: +49 341 30383-30

BI Business Intelligence GmbH
August-Bebel-Straße 44
D-4275 Leipzig

© 2008 BI Business Intelligence GmbH